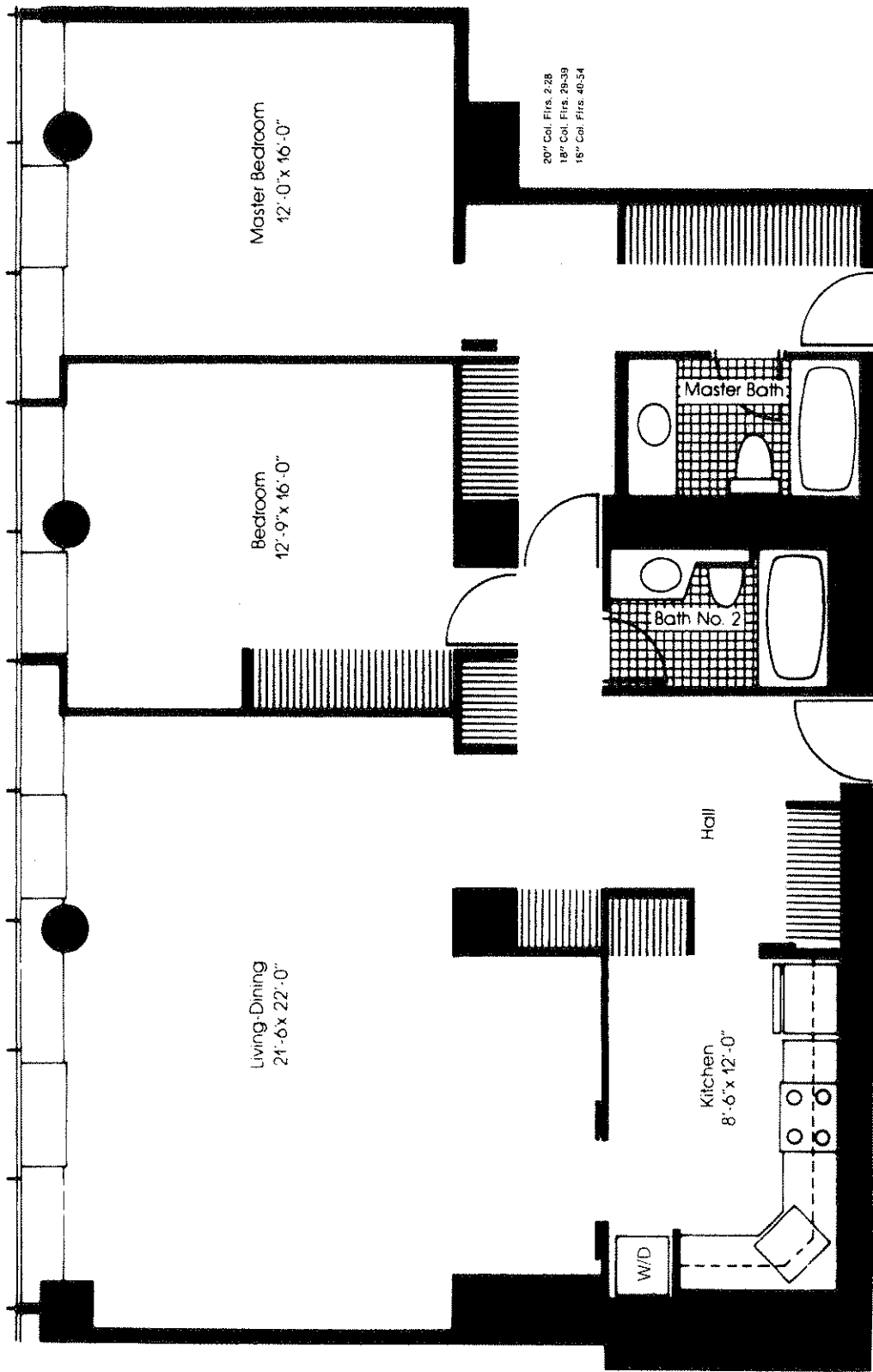


FACILITIES
 A/Passenger Elevators
 B/Passenger Elevators
 C/Service Elevators
 D/Rubbish Chute



20" Col. Firs. 2-28
 18" Col. Firs. 28-39
 16" Col. Firs. 40-54

SCALE: 1/4" INCH EQUALS APPROXIMATELY 1 FOOT

Dimensions are approximate. Plans subject to revisions deemed advisable by builder or architect or required by law. Where materials, brand names or model descriptions are used, the developer reserves the right to provide equipment which supplies equal or superior performance as deemed necessary because of production scheduling, shortages, changes in manufacturers' lines or other reasons. The alterations, additions, decorating, furnishing

and equipping of model apartments are designed to demonstrate how the apartment and others of comparable floor plan and layout can be furnished according to one designer's specific recommendation. The apartments that are for sale are offered in the condition as shown, except for the items and appliances specifically itemized in writing in the Purchase Agreement.

Sales and Management Agent: Sudler & Company
 For Harbor Point, Incorporated

"11" Tier
Two Bedroom
Floors 3-23
(odd)
Southeast